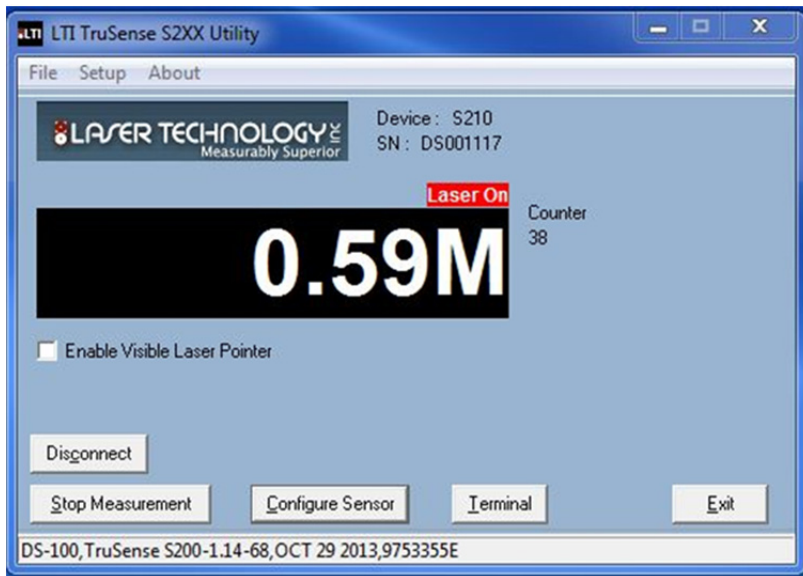
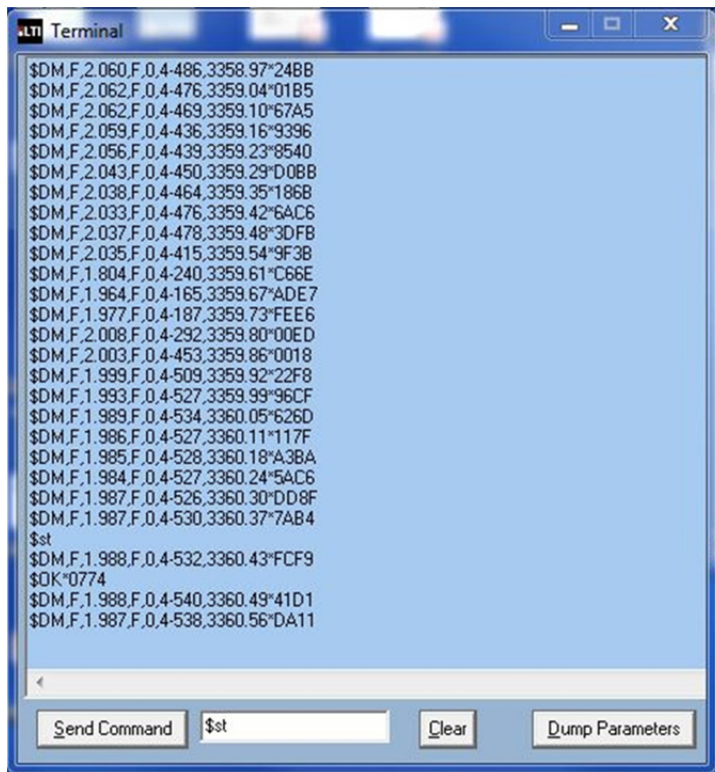


TruSense S200 S210 Configuration



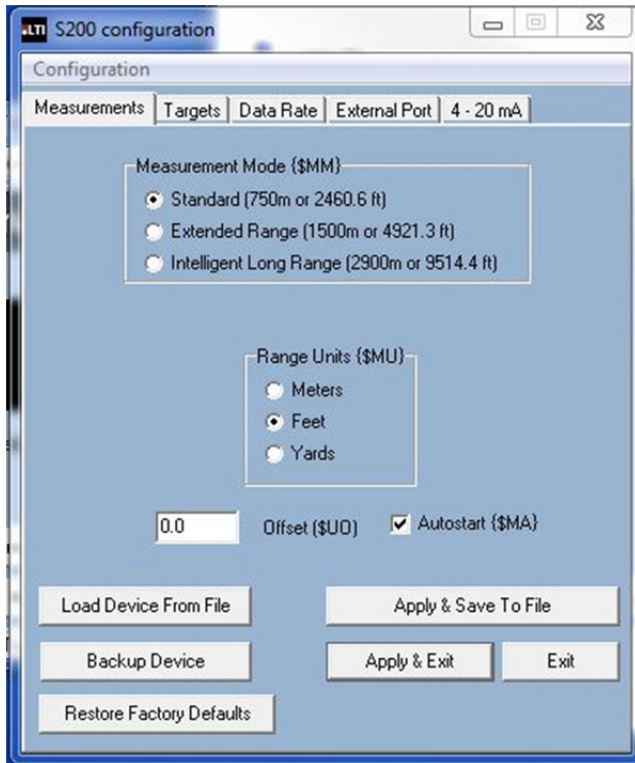
Graphical Users Interface

- **Device:** Model
- **SN:** Device serial number
- **Red "Laser On":** Laser is firing
- **Counter:** Measurement count
- **Enable Visible Laser Pointer:** Alignment laser
- **Terminal:** Brings up Terminal Mode. User can type in commands and see response as well as scrolling data as the sensor is measuring.
- Enter "Configure Sensor" for setup menus.



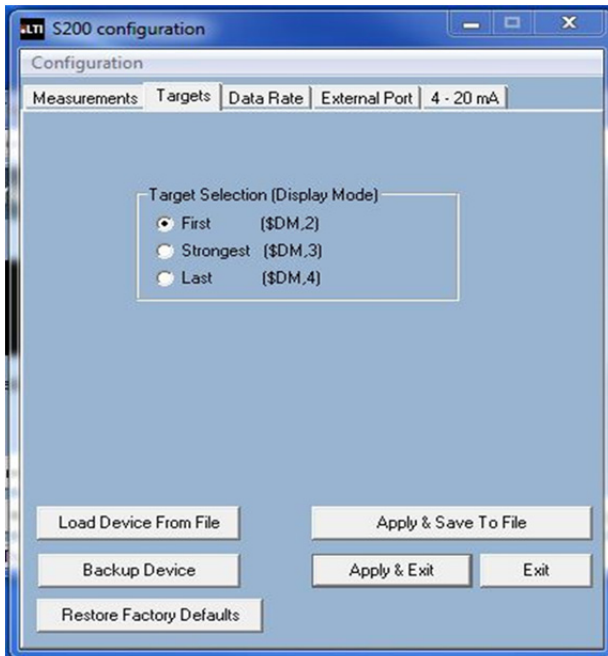
Terminal Window

- User may enter commands in the lower window. The data scrolls in the main window.
- **Dump Parameters:** Scrolls the settings in the sensor for review.



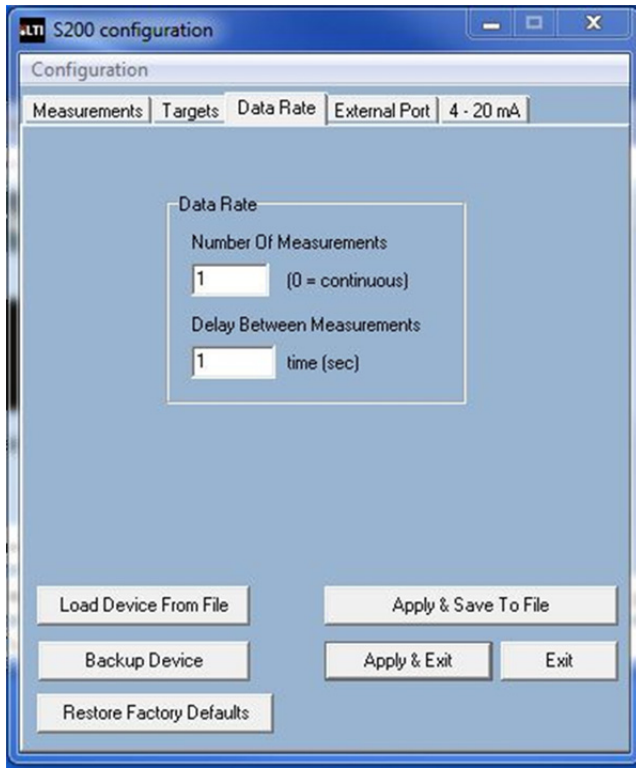
Measurements Tab

- **Measurement Mode:** Selection based on the maximum range.
- **Range Units:** User may select measurement units.
- **Offset:** Adds or subtracts from overall measurement.
- **Autostart:** Enable Autostart for sensor to automatically begin measuring on power up.
- **Load Device from File:** Upload file settings from saved file to sensor.
- **Backup Device:** Save current sensor settings to file.
- **Restore Factory Defaults:** Load settings from the factory from non-volatile memory.
- **Apply & Save to File:** Load menu settings to sensor and save to file.
- **Apply & Exit:** Save menu settings to sensor and exit
- **Exit:** Simply exit.



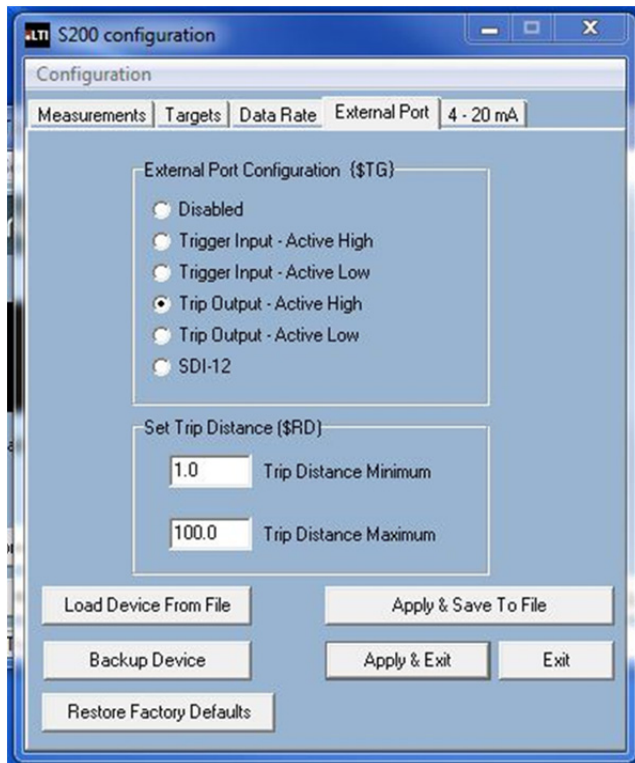
Targets Tab

- **Target Selection:** Target Discrimination Menu. User selects target based on application.
- Advanced target displays are available Serial Communication Protocol section



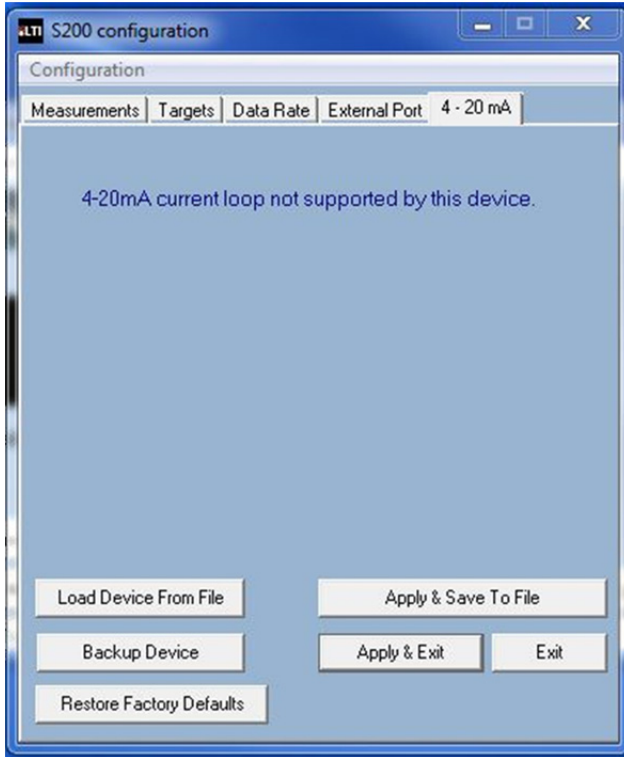
Data Rate Tab

- User can select data update rate. In this example, the update rate is set to 1 Hz or 1 measurement per second.
- User would set both windows to "0" for maximum update rate of 14 Hz using these settings.
- Example #1: The user wants an update rate of 5 Hz. They would enter 1 for number of measurements and 0.2 (the inverse of 5) for delay between measurements.
- Example #2: The user wants 1 reading every 10 seconds. They would enter 1 for number of Measurements and 10 for delay between measurements.



External Port Tab

- This menu appears when connected to an S210 and allows the user to select Trigger Modes and Trip Distance.
- **Trigger Input –Active Low (\$TG,2)** The unit will measure continuous if the \$GO command is set to 0 (\$GO,0). The sensor will not respond to the Stop command (\$ST). The user must then enter "\$TG,0" to stop the unit.



External Port Tab

- This menu appears when connected to an S200 or S210 as these do not support 4-20.

LTI TruSense S200 S210 Quick Guide

Copyright (c) [2015] Laser Technology, Inc. All Rights Reserved. Unauthorized duplication, in whole or in part, is strictly prohibited.

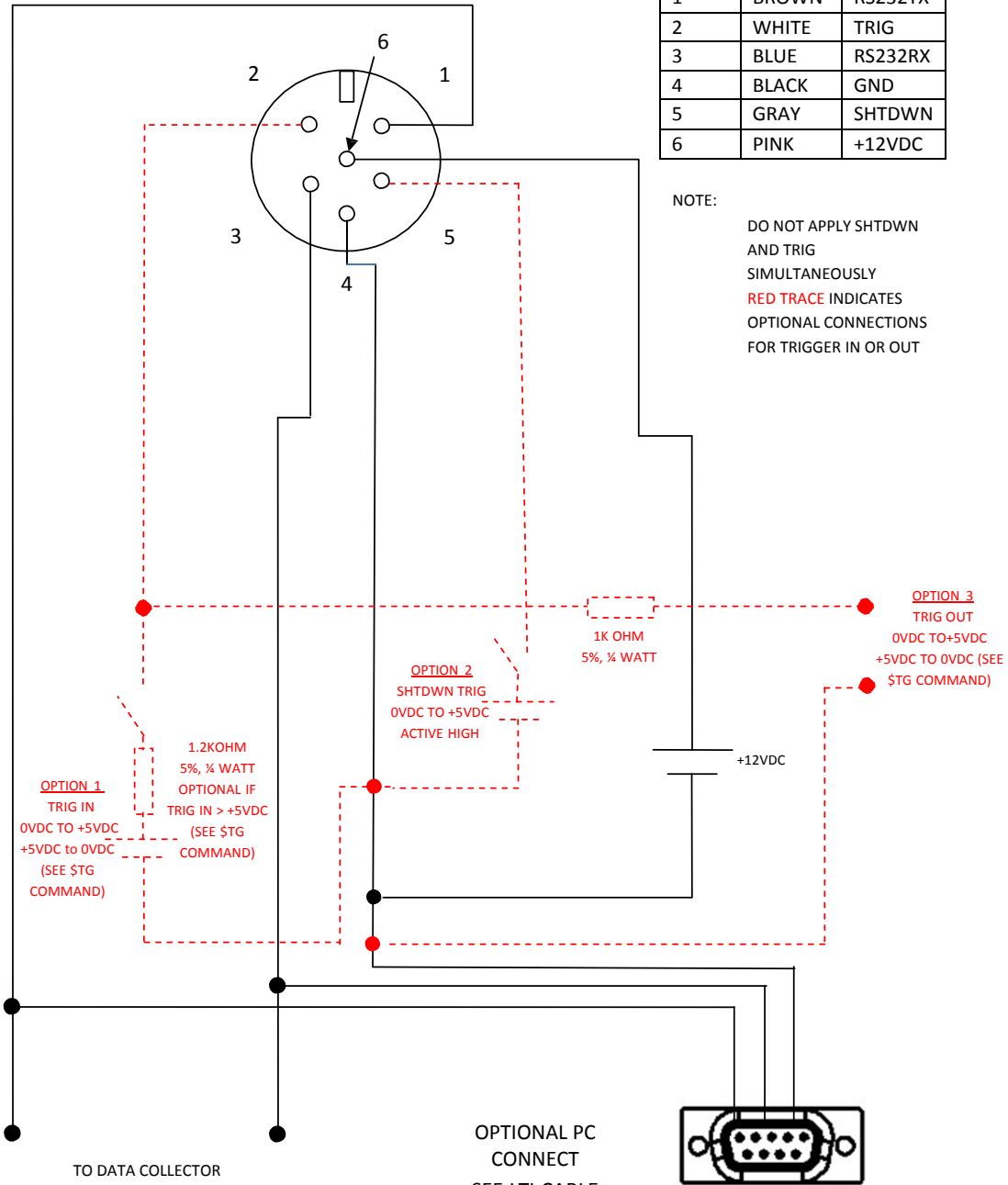
S200 / S210 I/O Trigger Cable with Optional PC Connect (1 of 2)

TURCK CABLE CONNECTOR
MALE VIEW (FROM CABLE)

1	BROWN	RS232TX
2	WHITE	TRIG
3	BLUE	RS232RX
4	BLACK	GND
5	GRAY	SHTDWN
6	PINK	+12VDC

NOTE:

DO NOT APPLY SHTDWN AND TRIG SIMULTANEOUSLY
RED TRACE INDICATES OPTIONAL CONNECTIONS FOR TRIGGER IN OR OUT

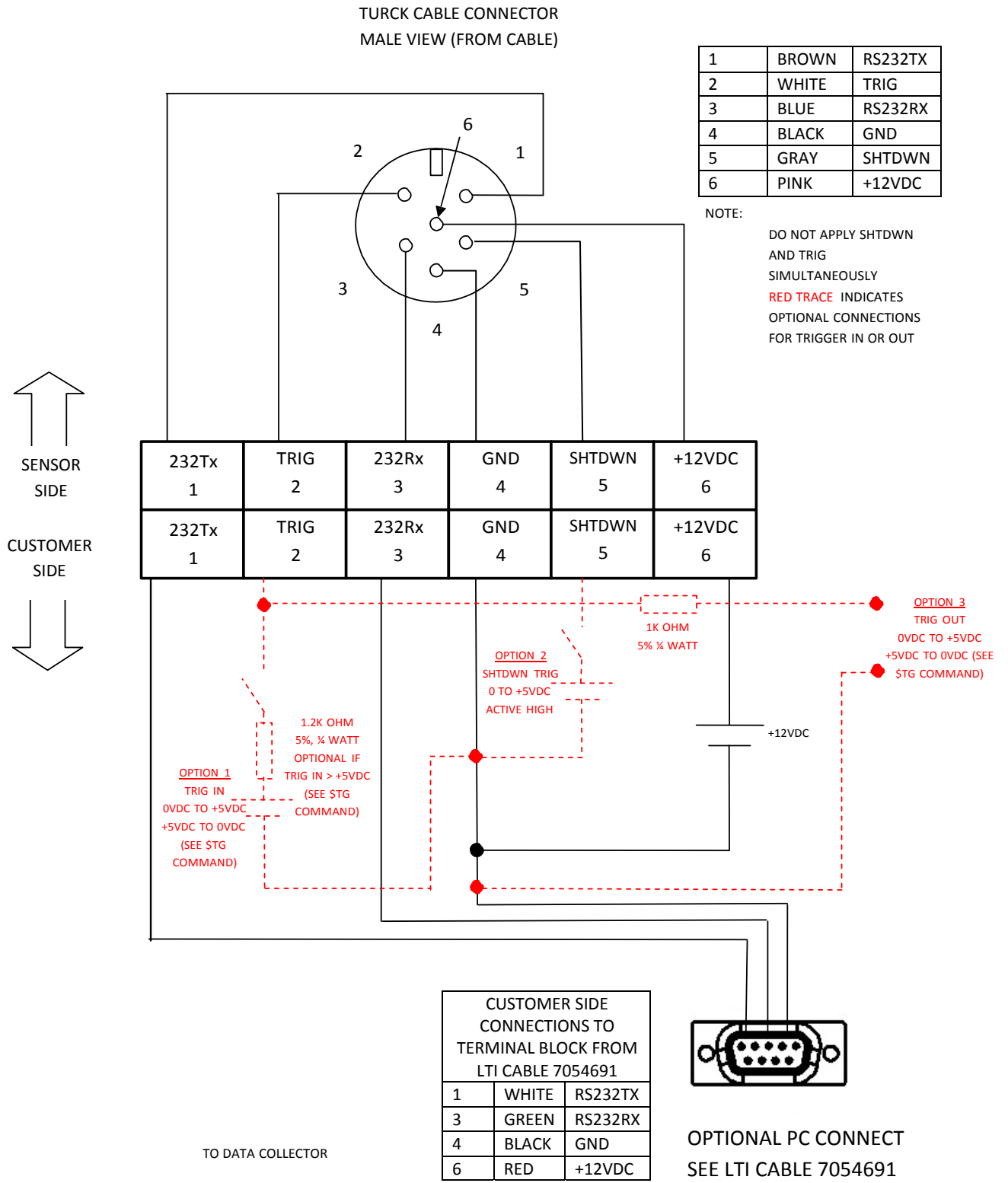


Required for initial sensor configuration only.

LTI TruSense S200 S210 Quick Guide

Copyright (c) [2015] Laser Technology, Inc. All Rights Reserved. Unauthorized duplication, in whole or in part, is strictly prohibited.

S200 / S210 I/O Trigger Ruggedized Enclosure Terminal Block with Optional PC Connect (2 of 2)

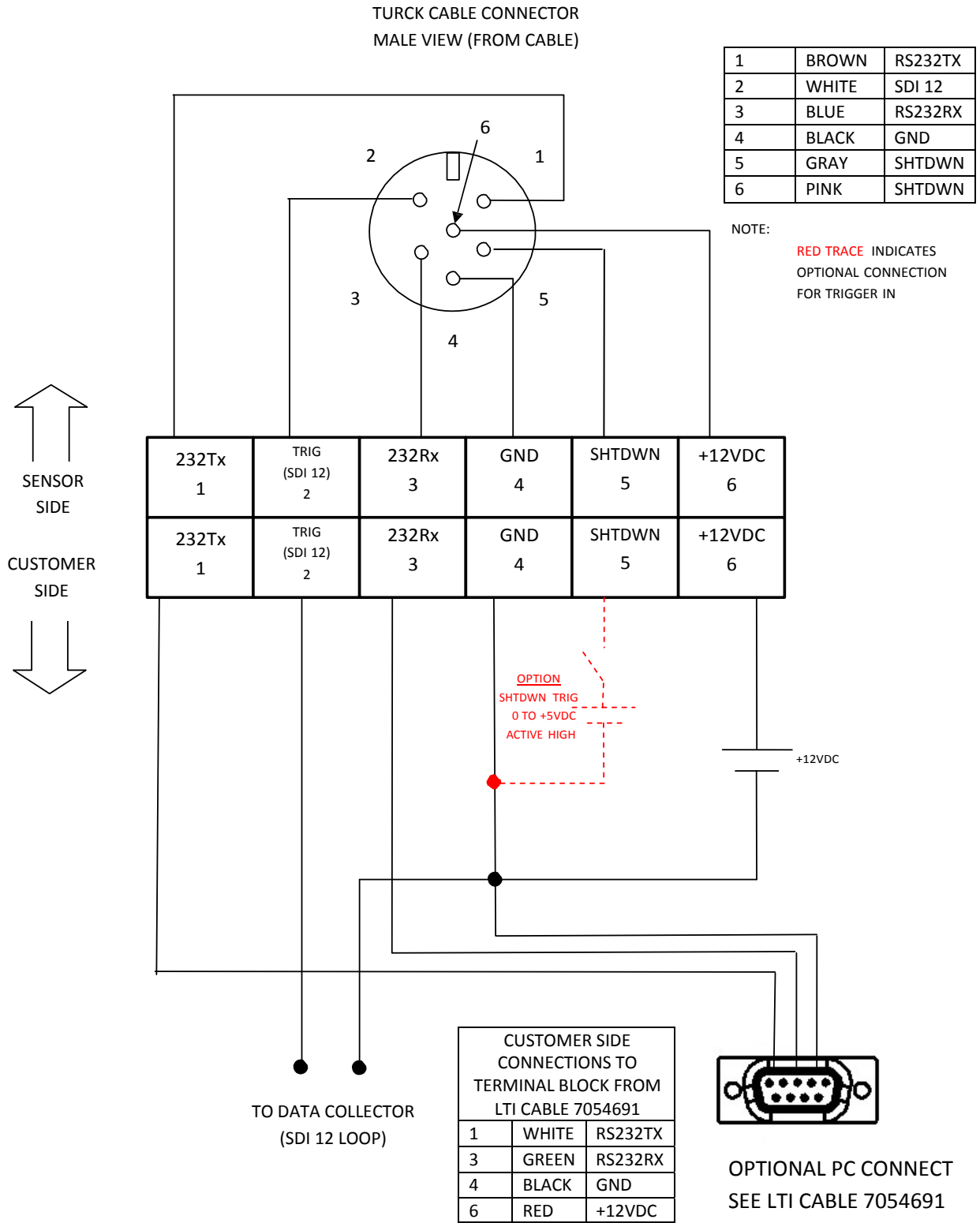


Required for initial sensor configuration only.

LTI TruSense S200 S210 Quick Guide

Copyright (c) [2015] Laser Technology, Inc. All Rights Reserved. Unauthorized duplication, in whole or in part, is strictly prohibited.

S200 / S210 SDI-12 Ruggedized Enclosure Terminal Block with Optional PC Connect (1 of 2)



Required for initial sensor configuration only.

LTI TruSense S200 S210 Quick Guide

Copyright (c) [2015] Laser Technology, Inc. All Rights Reserved. Unauthorized duplication, in whole or in part, is strictly prohibited.

Page 8

S200 / S210 SDI-12 Cable with Optional PC Connect Wiring Diagram (2 of 2)

TURCK CABLE CONNECTOR
MALE VIEW (FROM CABLE)

SENSOR CONNECTIONS		
1	BROWN	RS232TX
2	WHITE	SDI 12
3	BLUE	RS232RX
4	BLACK	GND
5	GRAY	SHTDWN
6	PINK	+12VDC

NOTE:

RED TRACE INDICATES
OPTIONAL CONNECTION
FOR TRIGGER IN

